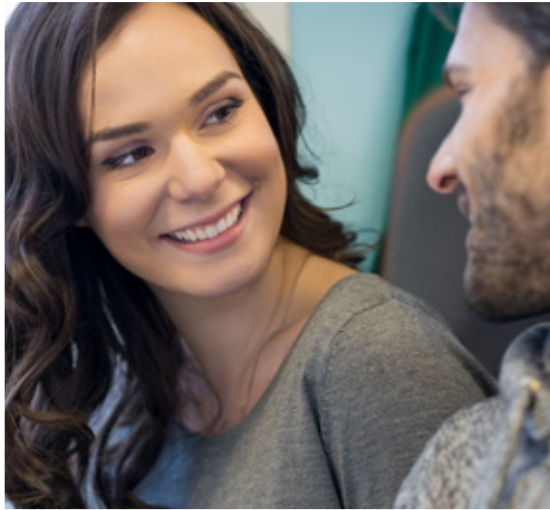


# A TOTAL SOLUTION

What makes us unique is  
our way of thinking



Safeman is your partner with almost 80 years' experience making people's life easier through meticulous design, development and manufacturing.



# **SAFEMAN**

## **- MAKING LIFE EASIER!**

Rooted in the Swedish business tradition, Safeman counts enterprise and among its core values.

We want our customers to perceive us as innovative, technically skilled and the logical choice for the development and purchase of products in our sphere of expertise. Despite striving to gain the trust of our customers and suppliers, we're not overly compliant.

### **A PROMISE MADE IS A PROMISE KEPT!**

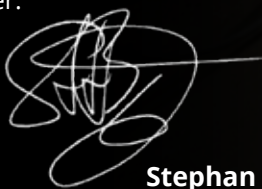
Profitability is a key part of our development, which is why we pursue cost efficiency and constant improvements underpinned by care for our employees, reduced environmental impact and rising profitability.

We want our employees to be satisfied and proud to belong to a company where people treat each other with honesty and respect.

Rooted in the community, Safeman is actively engaged in a range of networks which benefit the company, our workforce and their families.

Our commitment to people who are most in need underpins the way we think and interact with others. We enjoy taking on projects involving development of products and systems which can make life a little easier for those in difficult situations – even if they sometimes fall beyond our regular fields of expertise.

Caring for people lies at the heart of everything we do. You can see it in our products, which provide greater comfort, safety, protection and clean drinking water.



**Stephan Bengtsson**





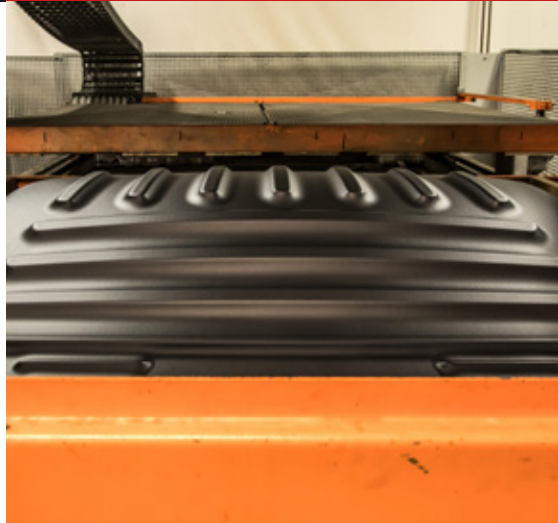
## PRODUCTION TECHNIQUES

Solving our customers' needs often requires a combination of technology and materials. We have the ability and the resources to solve problems and find optimal solutions.

## VACUUM FORMING

Vacuum-formed products have dimensional stability, which is a very competitive method for both large and small plastic components.

The manufacturing process has a limited impact on the environment because the materials contain no solvents and there are no harmful emissions. Residual material is recyclable.



## STAMPING/ WELDING/CUTTING

We use high-frequency, ultrasonic and water-jet cutting techniques for cutting materials such as plastics, textiles and leather. We also offer stamping and welding.

We combine our expertise and wide spectrum of knowledge with innovative thinking. This means we are able to rapidly come up with new, holistic solutions. We take the whole spectrum of properties into account, including low weight, durability, flexibility and cost-efficiency. This approach underpins the entire process from development to finished product.





## PROCESSING/ MILLING

This is where the fine adjustments are made. Edges are deburred, holes are drilled and components are glued or welded on. Many different tools are used, for example, ultrasonic welders. For milling, we mainly use advanced robotic technology or water-jet.



## SEWING

Combining long experience and the latest know-how, we make products in different materials to suit the customer's needs and wishes. Our sewn products include leather and textile coverings for the automotive and furniture industries.

Examples of our products include train seats, couchette bunks, disability aids, etc. For the best fit and shape, all prototypes are sewn in our own specialist sewing workshop.



## PRODUCTS

Safeman offers total solutions that enable customers to have their product further developed just the way they want it. All the way from purchasing of constituent components and assembly operations to final packaging, with assembly parts and instructions, entirely according to your demands.

## TRAIN SEATS

Modern travel demands innovative thinking. At Safeman, innovation is a natural part of everything we do.

Our train seats offer you comfortable travel thanks to unsurpassed expertise, experience and the power of innovation.

Our train seats can be found in Öresundståg, Norrtåg, Arlanda Express and Flytoget trains etc.



## BIODEGRADABLE COFFINS

As part of our commitment to the environment we've joined forces with a partner to create Biodolomer® K, a unique thermoplastic material produced from renewable raw materials which is fully biodegradable and compostable.

Among other products, Biodolomer® K is used to make cremation coffins which generate up to 60% lower carbon emissions compared to those in other materials. Boasting great potential, Biodolomer® K will be able to be used in a number of different applications.



## BRANDS

Safeman also develops and manufactures products for their own brands. This is a result of our broad expertise at all stages of the process, from concept to finished product on the marketplace.



**PREFENCE**  
MAKING GOOD CARS GREAT

Prefence is an innovative niche division of Safeman which focuses on designing, producing and selling equipment and accessories, to increase safety and comfort primarily for VANs weighing up to 3.5 tonnes.

## MAKING GOOD CARS GREAT!

Prefence products make good vehicles better, safer and more comfortable, enhancing overall function in goods vehicles as well as workplaces

Prefence has products for most makes of vehicles and is market leader in the Nordic region.

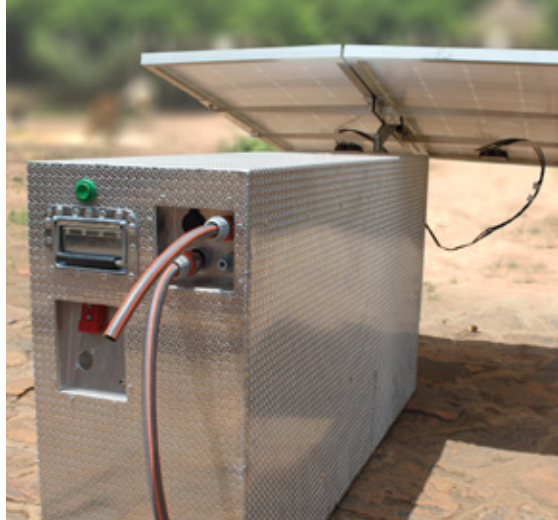
Our aim is to continue to expand into the rest of Europe.

  
**DÖRFSTRÖM**





There is an severe shortage of clean drinking water in many parts of the world. In our view, drinking water without the risk of falling ill should be a basic human right. This is why we developed Safewater, a product which purifies water by breaking down bacteria in line with WHO requirements. By running on solar energy, using the latest LED-UV technology, we can make life a little easier.



**"THANK YOU  
SAFEMAN FOR  
PROVIDING ME  
WITH CLEAN AND  
SAFE DRINKING  
WATER."**

**Xaverine Mukagahigi**

Nutritionist at a Health Center in Rwanda.

## **MAKING A DIFFERENCE!**

We offer a complete mobile, self-sufficient water purification solution.

With integrated solar cells, it quickly extracts clean drinking water from a contaminated well or rainwater tank.

In extreme circumstances, and especially where the general infrastructure has broken down, speedy access to clean drinking water can be the difference between life and death.



## ABOUT SAFEMAN

Safeman AB was established in 1939 as a manufacturer of personal protective equipment. Since then, for many years the company focused primarily on the production of interior fittings for the automotive industry. Today, Safeman manufactures everything from custom parts to high-volume units and assembled products for the entire industry.

## CONTACT US!

We have the ability and the resources to solve problems and find new optimal solutions. As an experienced subcontractor to, for example, the automotive industry, we are ready to meet highly varied demands and levels of complexity. We listen carefully to our customers' needs and work out the best solution for the challenges presented to us.



Östra Ringvägen 209, 293 40 Olofström, Sweden  
☎+46 454-970 00, [info@safeman.se](mailto:info@safeman.se), [www.safeman.se](http://www.safeman.se)

